



KYSTVERKET
NORWEGIAN COASTAL ADMINISTRATION



Digital Routes to Norwegian Ports support Digitalisation both on the ship and the shore side

(Quality Assured Routes for the Norwegian Coast)

John Morten Klingsheim, senioringeniør
avdeling for losforvaltning og navigasjonsteknologi, Kystverket 28.10.2022

– Clean, safe and efficient seaways



Sailing routes for safer and more efficient voyages on the Norwegian coast



- kai- og farvannsinformasjon, og bunkrings- og ladestasjoner direkte knyttet til kvalitetssikrede seilingsruter.

▶ ▶ 🔊 3:10 / 3:20

Scroll for details
▼



<https://youtu.be/eCVOKJwAQwE> / <https://routeinfo.no>

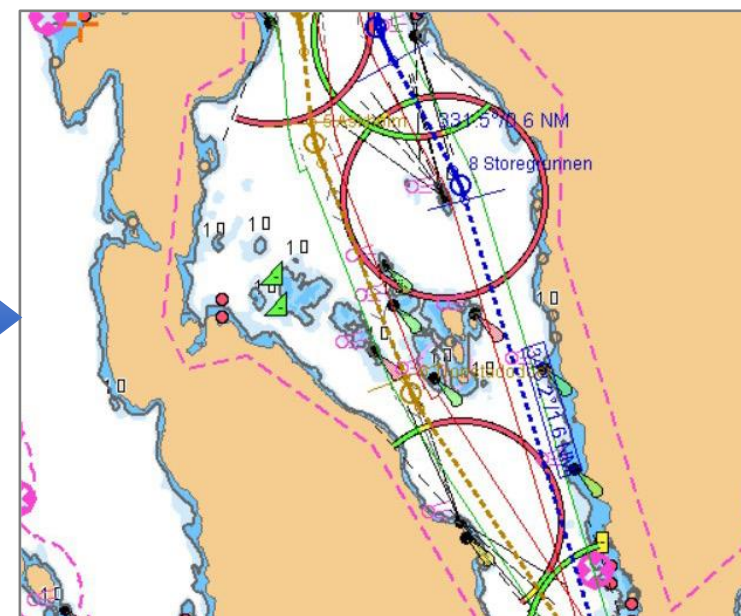
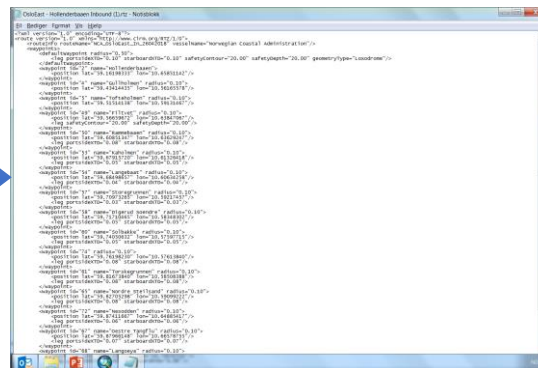
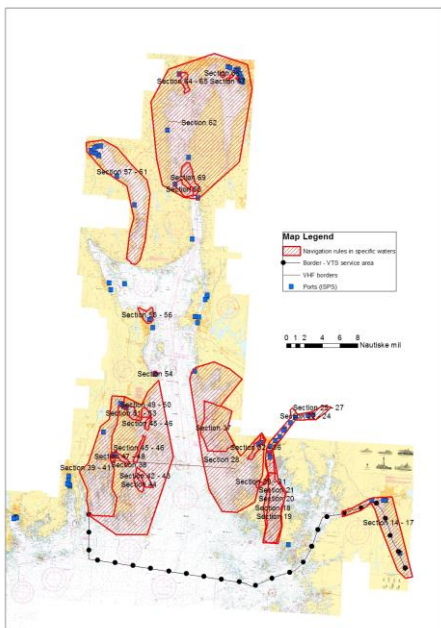
Information management in Geographical information System (ex. maritime regulations)

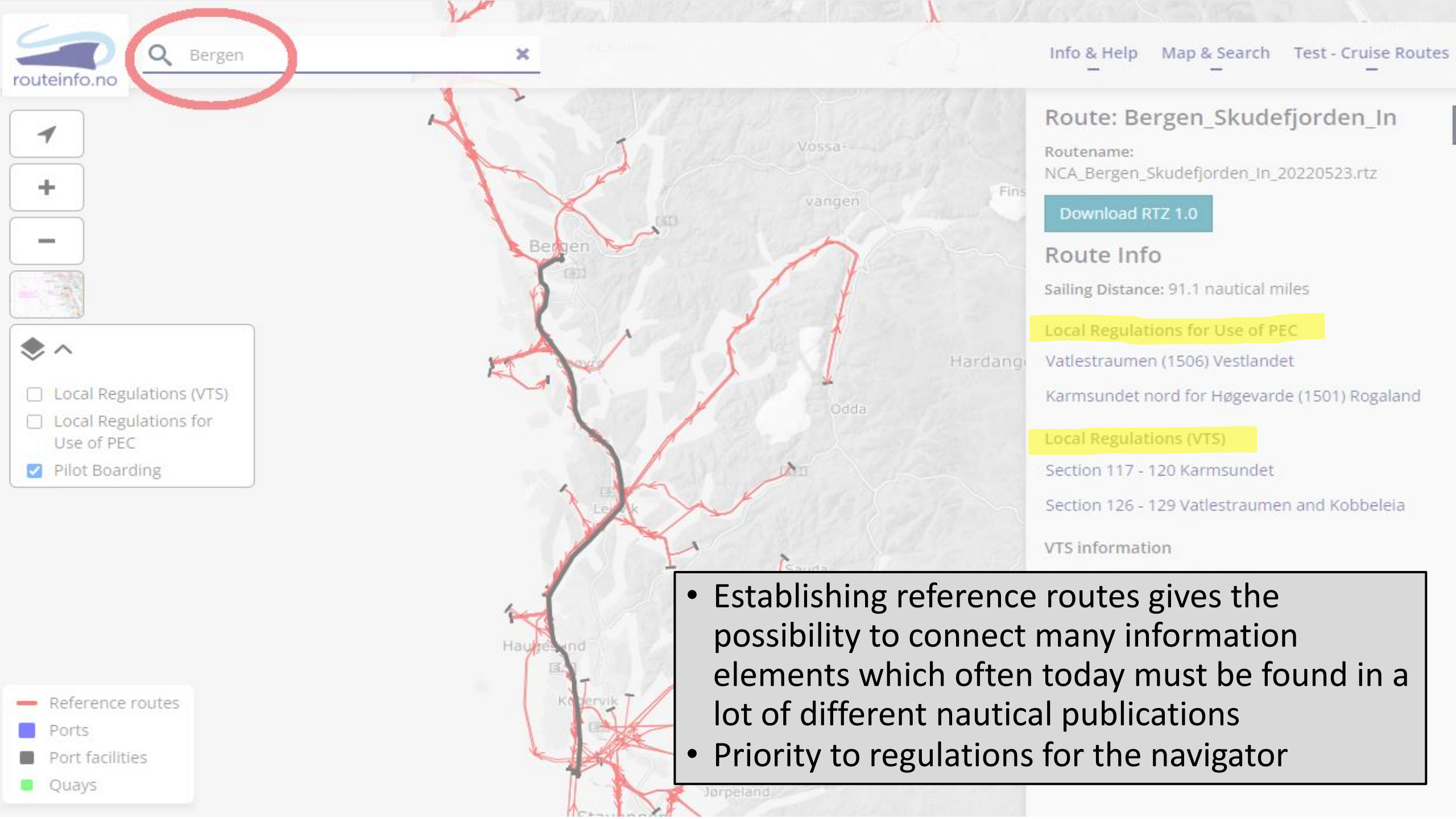


Nautical information in Electronic Chart Display and Information System (ECDIS)

route plan

(rtz and other international standards)





- Establishing reference routes gives the possibility to connect many information elements which often today must be found in a lot of different nautical publications
- Priority to regulations for the navigator

Nordic ITS stand

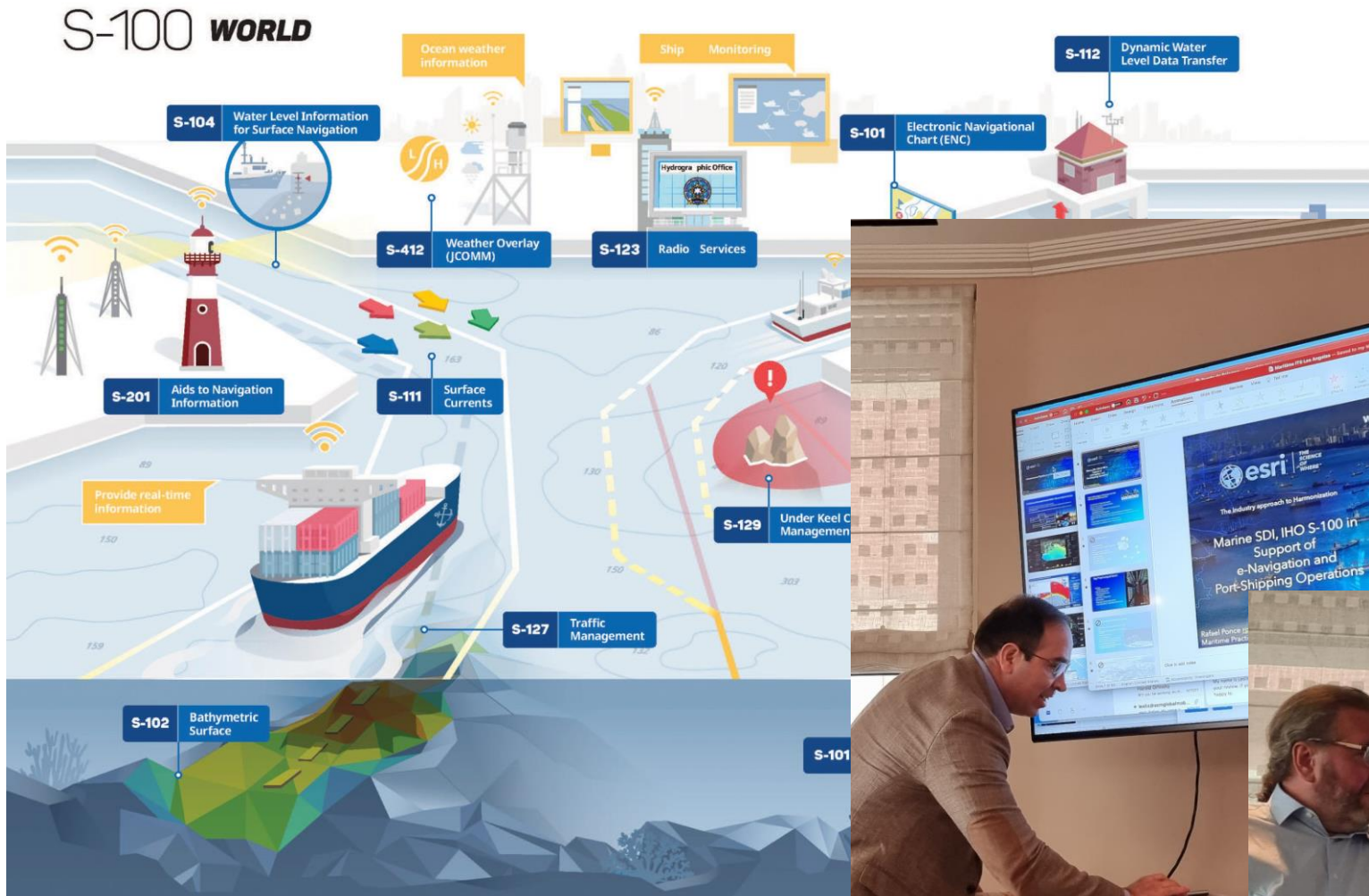


Maritime ITS workshop

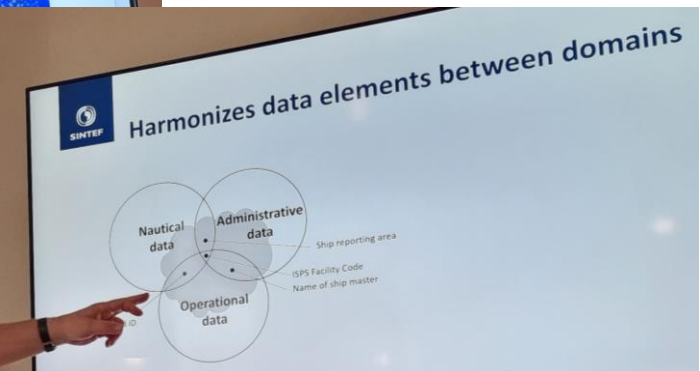


Maritim ITS – E-Navigasjon - Martime Single Window (IMO/EU)

(og smarte havner)



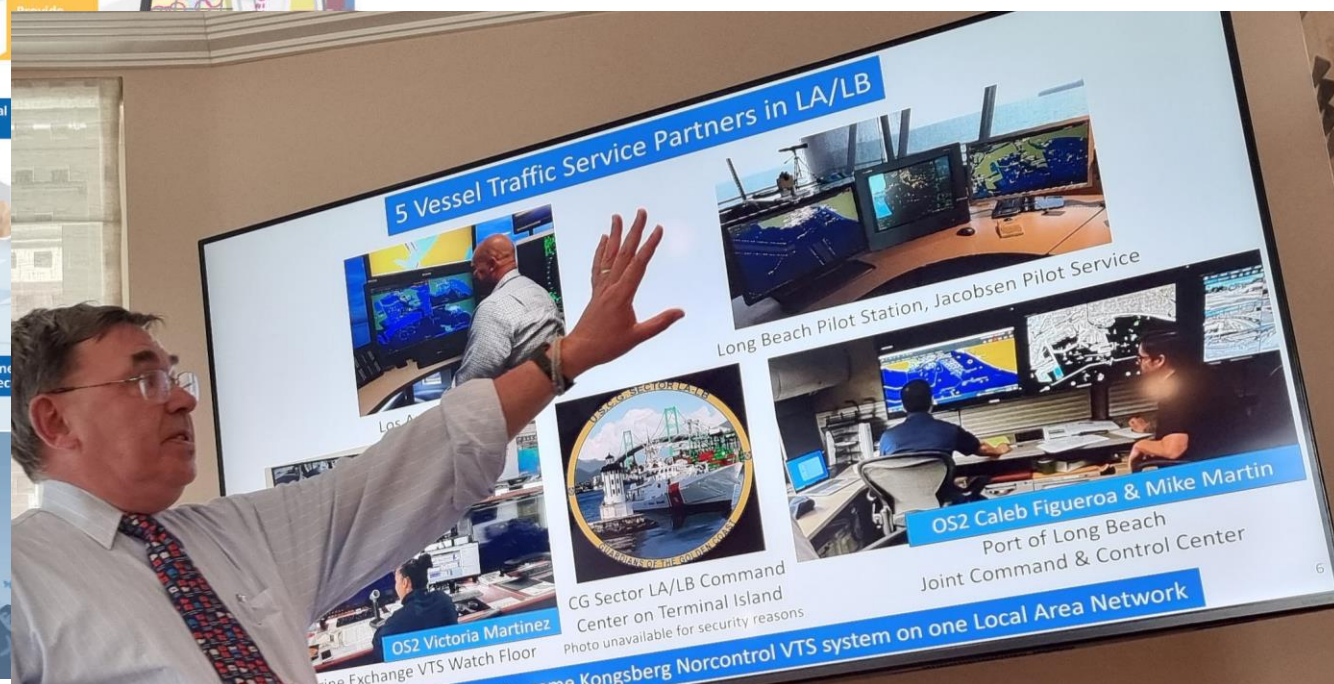
- Nyttig dialog med ESRI's strategier og rolle



VTS/Sjøtrafikksentral – Særlig vedrørende ankringsområder



- Nyttig kontakt og nyttig erfaringsutveksling
- Kongsberg systemer som Kystverket også benytter



- ADOT/ACA
- Svært nyttige møter.

ADOT

An Arizona Management System Agency

Learn about AMS

The Arizona Management System (AMS) is about:

- Measuring what matters and setting targets
- Visually tracking performance against targets. Identify gaps between targets and actual results. These problems are opportunities.
- Taking action to close gaps.

Three core elements:

- Performance Management
- Problem Solving
- Leader Standard Behaviors



TERMINOLOGY:
TALK THE TALK

Standard Work

The steps one needs to walk in order to complete a process. Work organized in the best known way or process at the time — fastest, safest, with built-in quality.



How ADOT aligns



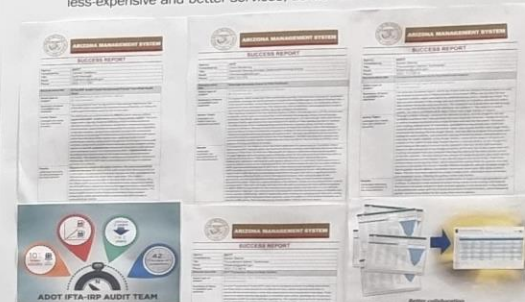
Agency Score Card:

- Charts progress toward objectives.
- Identifies areas that are on target (green), need improvement (yellow) or are falling below target (red)

steps to ADOT's
activities
ing results
ces and

ADOT success stories

The Governor wants to hear our success stories! ADOT sends these "Success Reports" which reflects ADOT "wins" that have resulted in faster, less-expensive and better services, as well as other improvements.



TERMINOLOGY:
TALK THE TALK

Standard Work

The steps one needs to walk in order to complete a process. Work organized in the best known way or process at the time — fastest, safest, with built-in quality.



Offentlige kartdata vs Private kartdata

Utfordrende når det blir mye tilgjengelig fra andre kilder enn det offentlige!

Relevante problemstillinger også for sjøveien, lostjenesten, sjøtrafikksentraltjenesten



'Cruise'



ITS / autonomi teknologi

Stor forskjell i teknologi, selv om mange av teknologiene er parallelle. Autonomi. ReachSubsea. Asko (ROC – Remote Operation Center?).

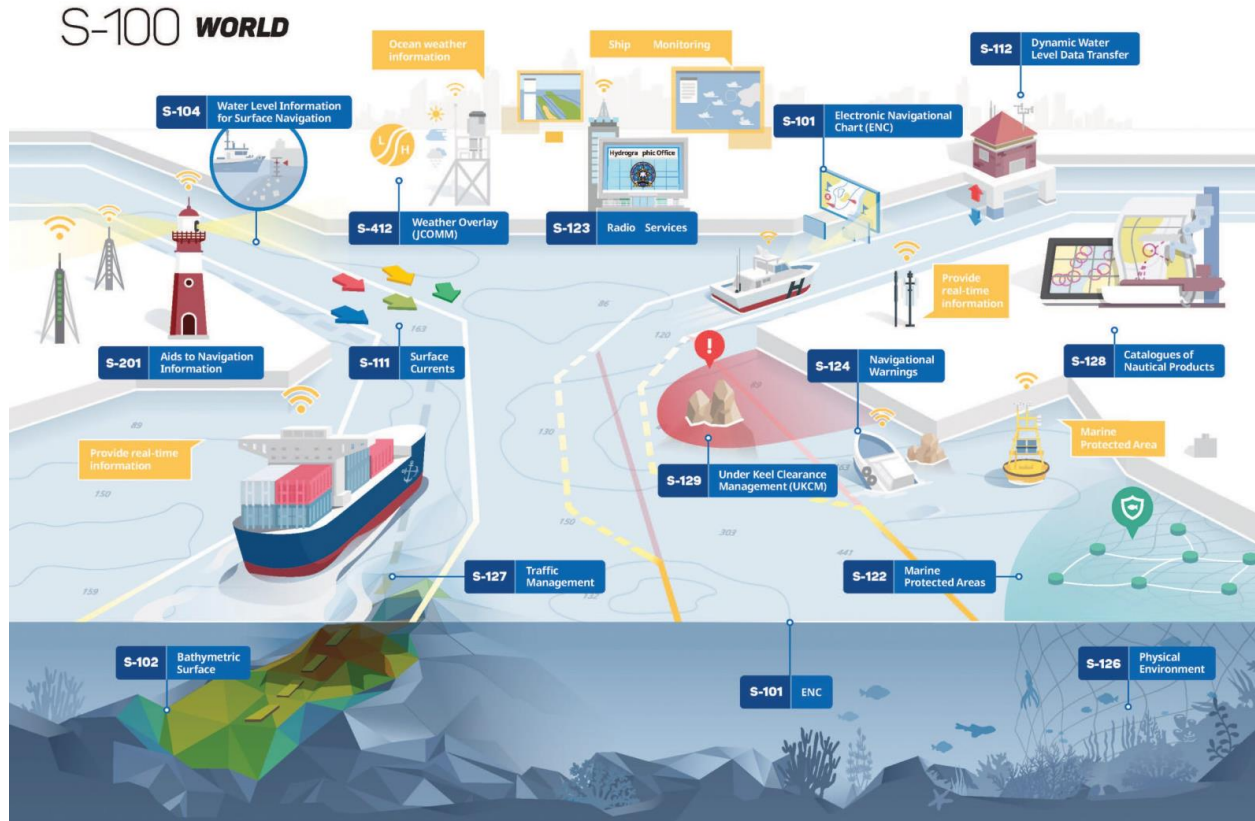


- Cruise-



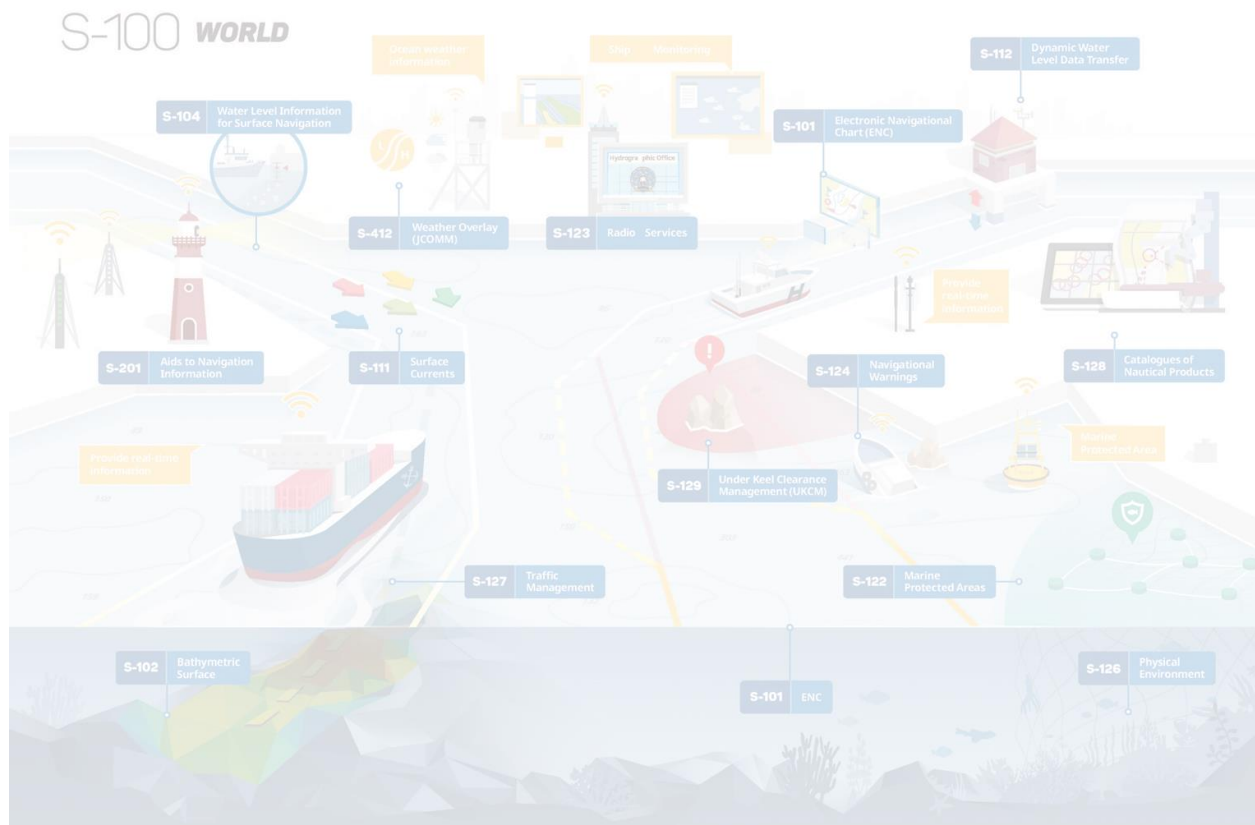
Reach Subsea / Kongsberg Maritime

The way forward



- Norway is therefore joining initiatives on the establishment of standards on maritime ITS which are based both in IMO, IHO, IALA, IEC and others.





Thank you!

Please take contact if there are any common interests

John Morten Klingsheim

jmk@kystverket.no

Phone +47 911 32 002

