



Tampere. Finland

# Tampere: Social sustainability in tough climate policy

Project Manager Sanna Ovaska, City of Tampere

Net Zero Cities

13th April 2023

Image: Jukka Salminen, Tiikerikuva





Population  
249,000

4837  
new residents  
2022



Image: Visit Tampere / Laura Vanzo

TAMPERE.  
FINLAND

## Tampere info

- The favourite city of Finns!
- City of business, students, ICT, culture, events
- Centre of the region



10 YEARS  
**SUMP**  
Award  
Safe and Healthy  
with Sustainable Mobility

12.4.2023



*Low-carbon mobility  
2030*



*A safe city for all*



*More with less –  
smart and creative*



*Encouraging the use  
of active modes of  
transport*



*Mobility  
opportunities for all*



*Environmental  
responsibility and health  
go hand in hand*



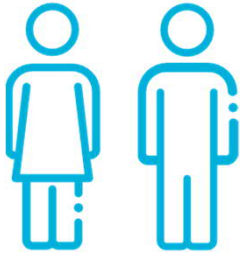
# Equality in mobility

For who we are building the city?

- Preventing mobility poverty
- Equality as a starting point for traffic planning and mobility services
- Finding socially sustainable climate actions
- 10 000 – 35 000 residents in Tampere have permanent mobility constraints
- Safe city for all: from children to old



# Mobility differences



Women use more public transport and walk, men use more cars and accumulate longer distances.

Distance travelled on a private car km/person/day (Tampere)<sup>1</sup>  
women 22,8 km • men 26,4 km

Share of trips covered on foot(Tampere) <sup>1</sup>  
women 60 % • men 40 %



For residents with an immigrant background, language skills may pose difficulties in using mobility services.

Of the entire population of Tampere, 7,6 % speak foreign language as their first language They contribute 25 % of population growth (2020)<sup>3</sup>



Those who experience mobility obstacles, such as difficulties standing up and walking, move significantly less than others.

Distance travelled in Finland in the age group 18–34-vuotiailla (all of Finland)<sup>2</sup>  
No obstacles 44 km/person/day  
One or more obstacles 18 km/person/day



Among young adults, getting a driver's licence is experiencing a small decline, and licences are obtained later than before.

B driver's licences with Tampere residents over 18<sup>4</sup>  
2014 52 % • 2019 43 %



Children and youth cover a larger share of their trips on foot compared to other age groups.

The share of trips covered on foot of all trips (Tampere)<sup>1</sup>  
age group 6–17 38 % • age group 35–54 23 %



There are plenty of individual differences in the mobility of senior citizens. Immobility increases with age.

The share of those who are immobile of the entire population over 75 (all of Finland)<sup>2</sup>  
women 41 % • men 33 %  
Difficulties standing up or walking 19 % of those over 75 (all of Finland) <sup>2</sup>

# Preventing mobility poverty



## **SUPPLY:**

A suitable mode of transport option is available.



## **ACCESSIBILITY:**

Important services and destinations can be reached with different modes of transport.



## **AFFORDABILITY:**

Mobility is reasonably priced.



## **TIME:**

The journey can be covered in a reasonable amount of time.



## **SUITABILITY:**

The mobility environment is safe, accessible and pleasant.



# Actions

- Developing assessment for human-related impacts
- From one-way communication to interactive co-planning
- Resources for sustainable modes, space for pedestrians
- Accessibility, physical, language
- E-scooter parking and restrictions
- Winter maintenance







# TAMPERE. FINLAND THANK YOU

Sanna Ovaska

[sanna.ovaska@tampere.fi](mailto:sanna.ovaska@tampere.fi)

Image: Visit Tampere / Laura Vanzo