



ITS Directive and Multimodal Travel Information Services (MMTIS)

and Interoperability of data sharing in rail transport (TEL TSI)

DG MOVE – Unit B4
Brussels

ITS Directive 2010/40/EU amended in 2023

- Framework for the **deployment of Intelligent Transport Systems** in the field of road transport and for interfaces with other modes of transport in the EU
- Amended by [Directive \(EU\) 2023/2661](#) of 22 November 2023
- Provides for the **availability of data** and the **deployment of ITS services** within four priority areas:
 - I - Information and mobility ITS services
 - II - Travel, transport and traffic management ITS services
 - III - Road safety and security ITS services
 - IV - ITS services for cooperative, connected and automated mobility

Priority area I: Information and mobility ITS services

Existing Delegated acts/EU specifications

- [Commission Delegated Regulation \(EU\) No 2015/962](#) on EU-wide real-time traffic information services (RTTI) – repealed and replaced in 2025 by [Delegated Regulation \(EU\) 2022/670](#)
- [Commission Delegated Regulation \(EU\) 2017/1926](#) on EU-wide multimodal travel information services (MMTIS) – amended in 2024 by [Delegated Regulation \(EU\) 2024/490](#)

Planned activity in the 2024-2028 WP

- Development of multimodal access nodes identifiers

Priority area II: Travel, transport and traffic management ITS services

Existing Delegated acts/EU specifications

- (none)

Planned activity in the 2024-2028 WP

- Continuity of traffic and freight management services - Enhanced traffic management

Priority area III: Road safety and security ITS services

Existing Delegated acts/EU specifications

- [Commission Delegated Regulation \(EU\) No 305/2013](#) on an interoperable EU-wide eCall – amended in 2024 to support packet-switched communications (4G/5G)
- [Commission Delegated Regulation \(EU\) No 886/2013](#) on road safety-related minimum universal traffic information free of charge to users (SRTI)
- [Commission Delegated Regulation \(EU\) No 885/2013](#) on information services for safe and secure parking places for trucks and commercial vehicles (SSTP)

Planned activity in the 2024-2028 WP

- Possible extension of eCall to other categories of vehicles
- Revision of the SRTI Delegated Regulation
- Revision of the SSTP Delegated Regulation

Priority area IV - ITS services for cooperative, connected and automated mobility

Existing Delegated acts/EU specifications

- Revision of the ITS Directive: new article 10a on the EU C-ITS security credential management system

Planned activity in the 2024-2028 WP

- Specifications for the EU C-ITS security credential management system
- Specifications for harmonised C-ITS services
- Specifications to foster the development and implementation of C-ITS

Article 6q and Annex III: availability of data

4. Static multimodal traffic data for EU-wide multimodal travel information services (as referred to in Annex I, Priority area I, paragraphs 1.1 and 1.3):			
Category Location of identified access nodes for all scheduled modes, including information on accessibility of access nodes and paths within an interchange (such as existence of lifts, escalators)	Urban nodes as defined in Article 3, point (p), of Regulation (EU) No 1315/2013 and listed in that Regulation, including those administered by the cities	31 December 2026	Delegated acts to be adopted pursuant to Article 7(1a), points (a), (b) and(c)
	The entire transport network of the Union	31 December 2028	Delegated acts to be adopted pursuant to Article 7(1a), points (a), (b) and (c)

ITS Directive (2010/40/EU)

Delegated Regulation on EU-wide multimodal travel information services (MMTIS) (2017/1926)

Amended March 2024 (2024/490)

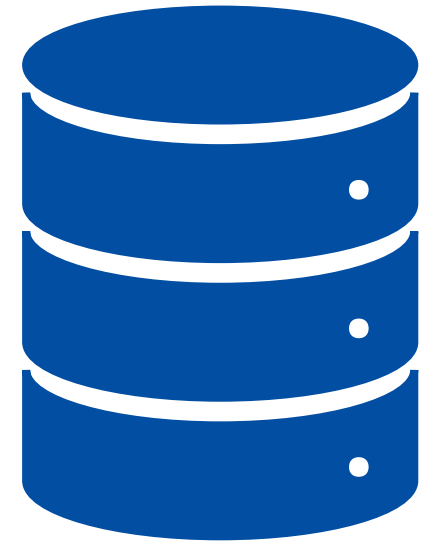
Objective



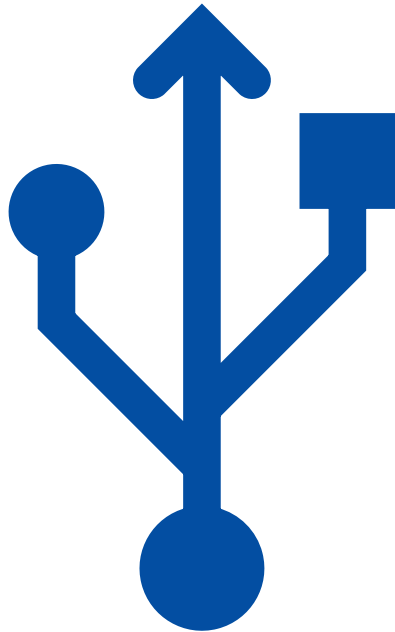
- In place since **2017, revision 2024** to mandate accessibility of new dynamic datasets via NAPs
- Provide passengers with relevant information to plan journeys seamlessly, including across modes
- Only apply to the data types listed in the Annex which **already exist in digital machine-readable format** and do *not* prescribe the creation of new data
- Applies to scheduled transport and transport on demand
- **Obligation for linking travel information services** (exchange of routing results for combined cross-border journey planning)

Data to be made available via NAP (see Annex for full list)

- Static data (**licence can be asked**)
 - Location search (access nodes)
 - Timetables
 - Network (road, cycle, pedestrian)
 - Parking
 - Fares
- Dynamic data (real-time) (**licence can be asked**)
 - Delays
 - Cancellations
 - Parking
 - Vehicle-sharing availability and location (car, bike, scooter)
 - Data on occupancy (optional)



Reference standards (Articles 4 and 5)



- NeTEx
- Transmodel
- DATEX II
- SIRI
- Technical specifications in Regulation (EU) No 454/2011 (TAP TSI)
- Technical documents published by IATA
- Standardised format referred to in Article 4 of DR RTTI
- Requirements set out in Article 7 of Directive 2007/2/EC (INSPIRE)

Implementation Article 4 (static data)

Deadline	Data	Examples data types (non-exhaustive list)
1 Dec 2019	Static data 1.1*	<ul style="list-style-type: none">- Addresses- Timetables- Road network, cycle network, pedestrian network
1 Dec 2020	Static data 1.2*	<ul style="list-style-type: none">- Location search (bike-sharing, car-sharing)- Basic common standard fares
1 Dec 2021	Static data 1.3*	<ul style="list-style-type: none">- Detailed common standard and special fares- Detailed cycle network attributes,
1 Dec 2023	Static data 1.1*, 1.2*, 1.3*	[See rows above]
1 Dec 2024	Static data	<ul style="list-style-type: none">- Location of parking places (on and off-street)- Basic, common, special fares for transport on demand
1 Dec 2025	Static data 1.4	<ul style="list-style-type: none">- Historic data on delays- Observed data on delays- Observed data on cancellations

Implementation Article 5 (dynamic data)

Deadline	Data/Level of Service	Examples data types (non-exhaustive list)
1 Dec 2025	Dynamic data 2.1	<ul style="list-style-type: none">- Disruptions, network closures, diversions- Estimated departure and arrival times- Status of access node features
1 Dec 2026	Dynamic data 2.2	<ul style="list-style-type: none">- Information service on parking tariffs- Availability and location of vehicle-sharing and car parking spaces
1 Dec 2028	Dynamic data 2.1, 2.2	[See rows above]

MMTIS: Implementation handbook

- For information purposes only
- Updated with 2024 MMTIS revision:
 - Description of the background to the revision in 2024
 - Overview of the different Articles
 - Q&A section
 - Summary of the support actions taken place to support the implementation of MMTIS – incl. the NAPCORE project
- Published on [DG MOVE website](#)



Interoperability Directive (2016/797/EU)

Implementing Regulation on a technical specification relating to the telematics subsystem of the rail system in the EU for interoperability of data sharing in rail transport (TEL TSI)

**Amended February 2026
(2026/253)**

Objective

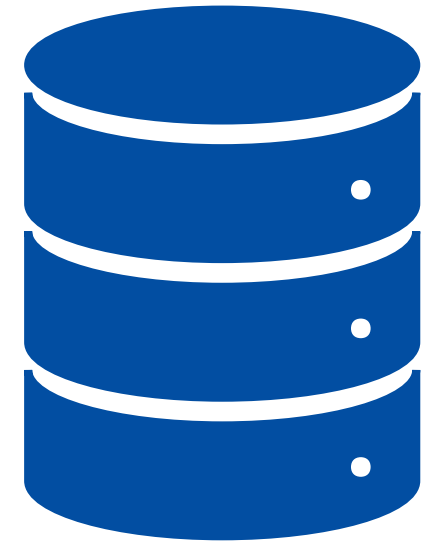


- In place since **2011**, **recast 2026** to support EU-wide multimodal travel information services enabling the development of single digital booking and ticketing through MDMS and associated rail passenger rights.
- Data sharing supports the fulfilment of Articles 9 and 10 of rail passenger rights Regulation (EU) 2021/782 to inform passengers before the trip (e.g. shortest travel time, train delays)

Rail data to be made available via NAP

PUBLIC AND FREE OF CHARGE

- Timetables
- Connections times
- Conditions of carriage (incl. accessibility)
- Accessibility of stations
- Real-time and forecast train traffic
- Train composition and platform information

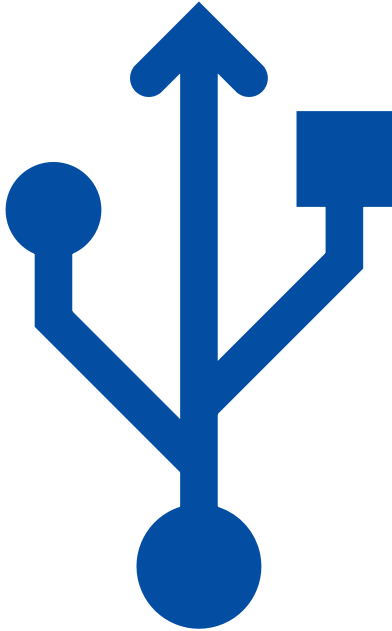


SUBJECT TO CONTRACT

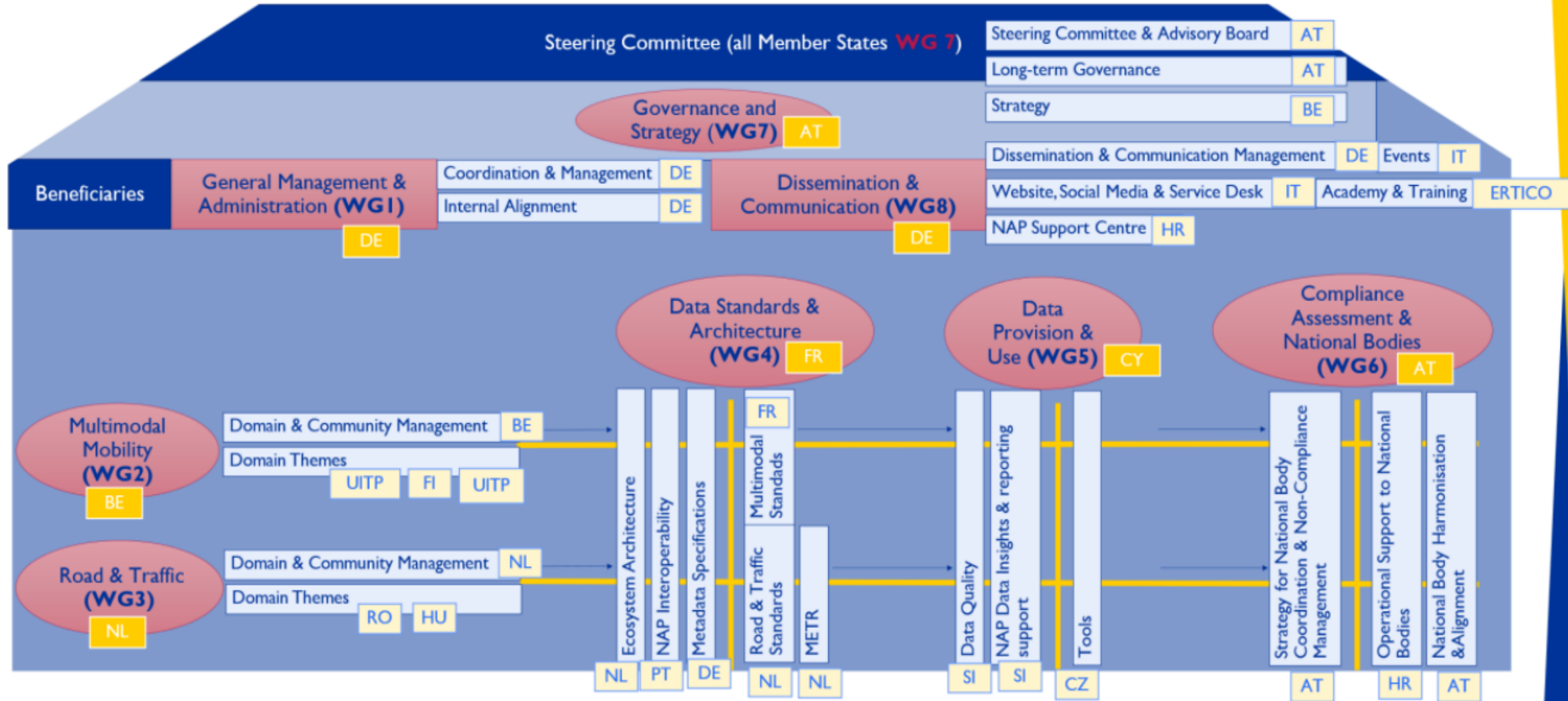
- Tariff

Reference standards

- NeTEx
- SIRI
- Transmodel-based API (EU EDIT project)



NAPCORE PROJECT



Thank you!

E-mail: yann.seimandi@ec.europa.eu

Victoire.champenois11@ec.europa.eu



© European Union 2020

Unless otherwise noted the reuse of this presentation is authorised under the [CC BY 4.0](https://creativecommons.org/licenses/by/4.0/) license. For any use or reproduction of elements that are not owned by the EU, permission may need to be sought directly from the respective right holders.

